

LISTENING TEST

In the Listening test, you will be asked to demonstrate how well understand spoken English. The entire Listening test will last approximately 45 minutes. There are four parts, and directions are given for each part. You must mark your answers on the separate answer sheet. Do not write your answers in the test book.

PART 1

Directions : For each question in this part, you will hear four statements about a picture in your test book. You hear the statements, you must select the one statement that best describes what you see in the picture. Then number of the question on your answer sheet and mark your answer. The statements will not be printed in your book and will be spoken only one time.

Sample Answer

☐ A ☐ B ☐ C ☐ D

Example



시험진행시간

01분 16초

파트별 문제이동

시험진행시간

03분 27초

파트별 문제이동

Part 5

101

Part 6

131

Part 7

147

Statement (B), "They're having a meeting," is the best description of the picture, so you should select answer (B) and mark it on your answer sheet.

1.

☐ (A) ☐ (B) ☐ (C) ☐ (D)[다음단계 >](#)

LC문제는(1~100번) 듣기가 종료 하여도, 답안을 체크해야 다음 문제로 이동 가능하며, “다음단계” 클릭 시 자동 저장

READING TEST

In the Reading test, you will read a variety of texts and answer several different types of reading comprehension questions. The entire Reading test will last 75 minutes. There are three parts, and directions are given for each part. You are encouraged to answer as many questions as possible within the time allowed.

You must mark your answers on the separate answer sheet. Do not write your answers in the test book.

PART 5

Directions : A word or phrase is missing in each of the sentences below. Four answer choices are given below each sentence. Select the best answer to complete the sentence. The mark the letter (A), (B), (C), or (D) on your answer sheet.

101. Karlton Geotechnics has ----- introduced a new ground-breaking excavator to the market.

- ☐ (A) successful
- ☐ (B) successfully
- ☐ (C) successes
- ☐ (D) success

다음단계 >

시험진행시간



114분 28초

파트별 문제이동

Part 5

101

GO

Part 6

141

GO

Part 7

153

GO

RC(101~200번) 문제부터는 오른쪽 파트별 문제 이동 메뉴를 통해 원하는 문제부터 풀 수 있음

English& CBT 모의 토익 테스트

Reading comprehension

These rules must be closely ----- to in all shopping areas. Also, if you have something

- (A) adhered
- (B) approached
- (C) belonged
- (D) obeyed

you ----- to return, make sure to bring your receipt. We cannot take items that have no

- (A) have liked
- (B) were liked
- (C) would like
- (D) had liked

receipt, not even for store credit. NO EXCEPTIONS WILL BE MADE. These simple rules can make shopping for you and everyone else at Brick Mart a much more pleasurable experience. Thank you.

41. ☐ (A) concern ☐ (B) optimize ☐ (C) balance ☐ (D) press
42. ☐ (A) adhered ☐ (B) approached ☐ (C) belonged ☐ (D) obeyed
43. ☐ (A) have liked ☐ (B) were liked ☐ (C) would like ☐ (D) had liked

다음단계 >

시험진행시간



02분 18초

파트별 문제이동

Part 5

1

GO

Part 6

41

GO

Part 7

53

GO

RC는 Part 별로(101~200번) 오른쪽 메뉴를 통해 GO 버튼 클릭으로 해당 문제로 이동 가능하나, LC(1~100번)는 Listening으로 다시 듣기가 불가능합니다.

- (B) progress
(C) increase
(D) promotion

satisfied, as well.

Our commitment to quality and great foods has earned your trust and we believe we hold a spot in your hearts for a good restaurant. We will continue to cook up great food, and we hope you will enjoy us ----- you have before!

- (A) even as
(B) as if
(C) only if
(D) as much as

Thank you.

44. ☒ (A) serving ☐ (B) to serve ☐ (C) serviceable ☐ (D) service

45. ☒ (A) report ☐ (B) progress ☐ (C) increase ☐ (D) promotion

46. ☐ (A) even as ☐ (B) as if ☐ (C) only if ☒ (D) as much as

다음단계 >

시험진행시간



03분 11초

파트별 문제이동

Part 5

1

GO

Part 6

41

GO

Part 7

53

GO

체크한 마킹(다음단계 클릭 시 저장됨)은 이동하여도 자동 저장됨으로 주의해주세요

- ☒ (C) She just started a new position.
- ☐ (D) She has just been introduced to Mr. Badla.

198. Why does Mr. Badla mention his business dealings in his e-mail?

- ☒ (A) To reply to a comment made by Ms. Glos
- ☐ (B) To celebrate the closing of negotiations
- ☐ (C) To allow Ms. Glos to participate more in the sales meetings
- ☐ (D) To explain the importance of local knowledge

199. What is NOT one of Mr. Badla's suggestions?

- ☐ (A) Arrive punctually for business meetings
- ☐ (B) Begin business discussions immediately
- ☐ (C) Visit some cultural and historical sites
- ☒ (D) Be flexible in business negotiations

200. In the second e-mail, the phrase 'counting on' in paragraph 3, line 2 is closest in meaning to

- ☐ (A) adding up
- ☐ (B) being certain of
- ☒ (C) keeping records of
- ☐ (D) traveling to

응시완료

시험진행시간



126분 54초

파트별 문제이동

Part 5

105

GO

Part 6

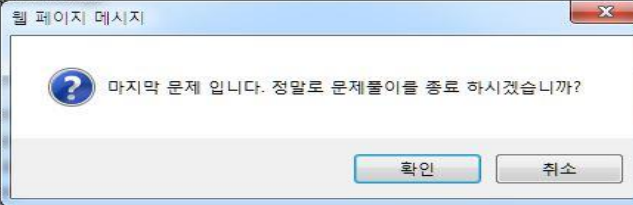
141

GO

Part 7

153

GO



시험 종료 전 문제 마킹 상태 확인 필수! / 종료 확인 클릭 시 테스트는 종료됨

시험진행시간



127분 37초

파트별 문제이동

Part 5

105



GO

Part 6

141



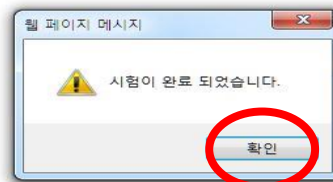
GO

Part 7

196



GO



본인이 마킹 체크 상태 확인 후 “**확인**” 버튼 클릭 시 테스트는 모두 완료